

EPSON STYLUS™ PHOTO 750

# Online Guide

for Windows and Macintosh



Introduction  
Opening the Online Guide  
Installing Microsoft® Internet Explorer 4.0  
System Requirements

4009525-00

# ***Introduction***

---

This CD-ROM includes the following online guides:

❑ **Reference Guide**

This guide contains detailed information about printer driver settings, printing on special paper, problem solving, printer specifications, and customer support. You can install this guide on your hard disk.

❑ **Color Guide**

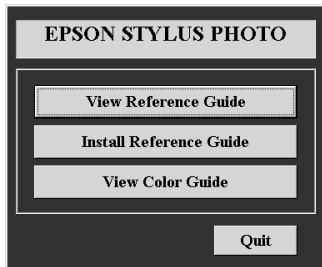
See this guide to learn more about color printing. It includes samples and troubleshooting information that will help answer your questions about printing full-color documents.

Internet browser software is required to view these guides. You can use the browser currently installed on your computer, or install Microsoft Internet Explorer 4.0 from this CD, as explained in this booklet.

## Opening the Online Guides

### For Windows:

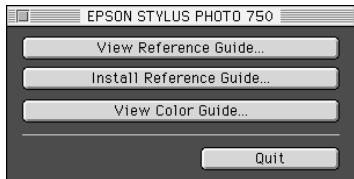
1. Insert the online guide CD in your CD-ROM drive.
2. The dialog box on the right appears.  
If it does not, double-click the My Computer icon, double-click the CD-ROM icon, then double-click **ESP750.exe**.
3. Click View Reference Guide or View Color Guide to open these guides from the CD.



To install the Reference Guide on your hard disk, click **Install Reference Guide** and follow the on-screen instructions. When installation is complete, a Reference Guide icon appears in the EPSON folder. Double-click the icon to open the guide.

## *For Macintosh:*

1. Insert the online guide CD in your CD-ROM drive.
2. Double-click **EPSON STYLUS PHOTO 750**. The dialog box on the right appears.
3. Click View Reference Guide or View Color Guide to open these guides from the CD.



To install the Reference Guide on your hard disk, click **Install Reference Guide** and follow the on-screen instructions. When installation is complete, a Reference Guide icon appears in the EPSON folder. Double-click the icon to open the guide.

## ***Installing Microsoft® Internet Explorer 4.0***

---

Internet browser software is required to use the Reference Guide and the Color Guide. If you do not have an Internet browser, install Microsoft Internet Explorer 4.0 from this CD.

**Note:**

*If you already have an Internet browser installed, you probably will not have to install Internet Explorer.*

**For Windows:**

**Note for Windows NT 4.0 users:**

*Before installing Microsoft Internet Explorer 4.0, you need to install the Windows NT Service Pack 3. Follow the instructions in **Browser\Win95nt\NT4sp3\Readme.txt** on this CD. Read also **License.txt** in the same directory.*

- 
1. Insert the online guide CD in your CD-ROM drive. If the dialog box on the previous page appears, click **Quit**.
  2. Double-click the **My Computer** icon, then double-click the CD-ROM icon.
  3. Double-click the **Browser** folder.
  4. Double-click **Win95nt** then double-click **ie40**.
  5. Double-click **ie4setup.exe** and follow the instructions on the screen.

### ***For Macintosh:***

1. Insert the online guide CD in your CD-ROM drive.
2. Double-click the **Browser** folder.
3. Double-click **Internet Explorer 4.0** and follow the on-screen instructions.

## ***System Requirements For Windows***

---

To use this online guide CD, you need Microsoft Windows<sup>®</sup> 95, 98, or NT 4.0, and the following:

- |                  |   |
|------------------|---|
| System:          | i486/25 MHz<br>(Pentium or better recommended)  |
| Memory:          | 16MB (32MB or more recommended)   |
| Hard disk space: | 20MB<br>8MB to install the Reference Guide<br>15MB to install Microsoft Internet Explorer 4.0 |
| CD-ROM drive:    | Double-speed<br>(Quad-speed or better recommended)  |
| Sound:           | Audio board with speakers or headphones   |

---

Display: 640 x 480 pixel or 800 x 600 pixel,  
with High Color (16 bit) or True Color  
(32 bit) setting

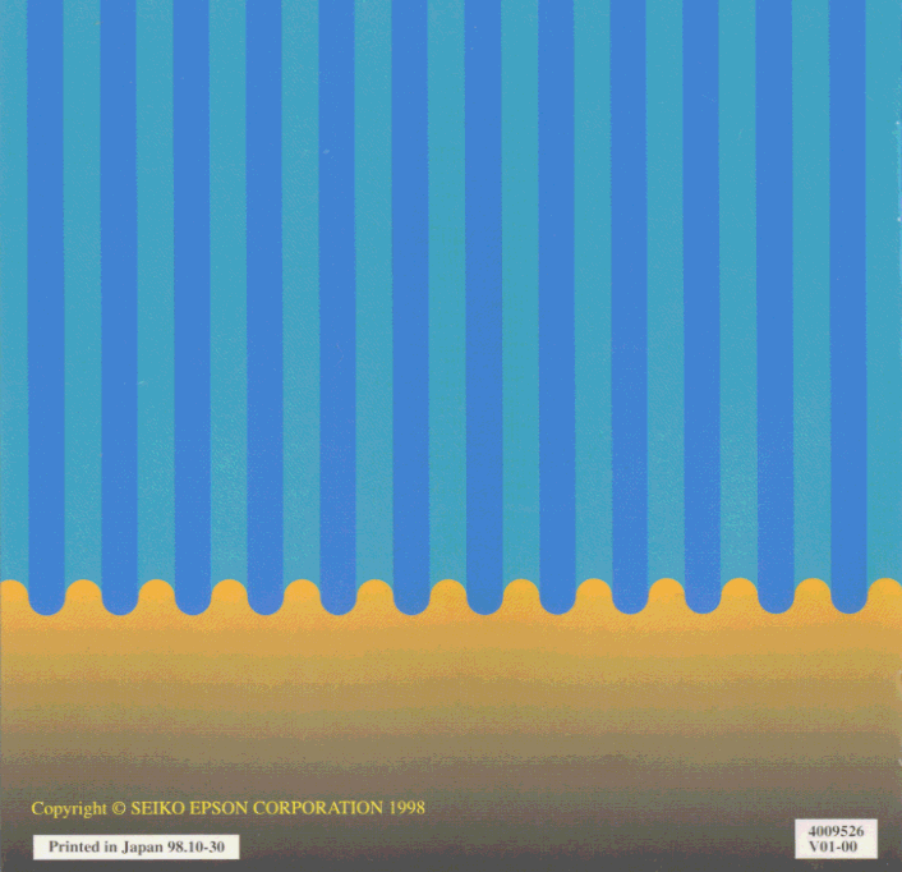
Software: Internet browser  
(Microsoft Internet Explorer 4.0 or later  
recommended)



## ***System Requirements For Macintosh***

---

System:	System 7.1 (System 7.5 or later recommended)
Memory:	16 MB (32 MB or more recommended)
Hard disk space:	20 MB 8 MB to install the Reference Guide 15 MB to install Microsoft Internet Explorer
CD-ROM drive:	Double-speed (Quad-speed or better recommended)
Display: more	Color monitor with 640 x 480 dot or  (32000-color monitor recommended)
Software:	Internet browser (Microsoft Internet Explorer 4.0 or later recommended)



Copyright © SEIKO EPSON CORPORATION 1998

Printed in Japan 98.10-30

4009526  
V01-00